

Who is the workshop for?

This highly practical and innovative workshop is for everyone who has always wanted to get inside the mysteries of modes, pentatonic musicing, world and new scales and is appropriate for participants with all levels of musical experience.

The workshop will:

- be uplifting and informative
- inspire you to create new soundscapes in your own music
- transform any sense of daunting musical jargon into living musical experiences
- be invaluable for participants involved in music education, music therapy, folk and early music, as well as composers and those interested in the evolution of consciousness.

Testimonial

Tonalis is watering the roots of music and reviving the mystery. IT IS VITAL WORK.
Jonathan Harvey - Composer & Author of 'Music & Inspiration' and 'In Quest of Spirit'

N.B. Michael's book 'The Mysteries of the Modes' will be on sale at the course.

Michael Deason-Barrow is the director of 'Tonalis Music Centre'. He is a master singing teacher, university lecturer, author and composer whose open questioning mind has enabled him to extend the boundaries of musical understanding. You will find that he is an expert in the modal worlds of folk, early and contemporary music and that he has the gift of making profound musical questions clear and utterly fascinating.

FEES:

£95 (by June 1st) £105 (by July 1st) £110 (thereafter)

CONCESSIONS: Deduct £7 each from the above fees for students, OAPs, and Groups of 3+
Work Scholarship Fee: £65 One Work Scholarship is available to students & the unwaged.

Times: Saturday 11:00am - 6:30pm, Sunday 10am - 5:00pm

A Registration Letter incl. travel directions will be sent on receipt of your application.

Lunches: Bring your own or local cafes / pubs.

TONALIS, 4 Castle Farm Close, Leighterton, GLOS, GL8 8UY

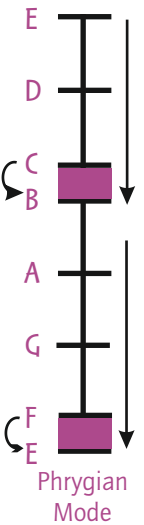
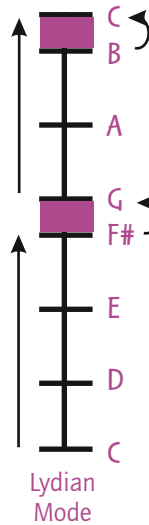
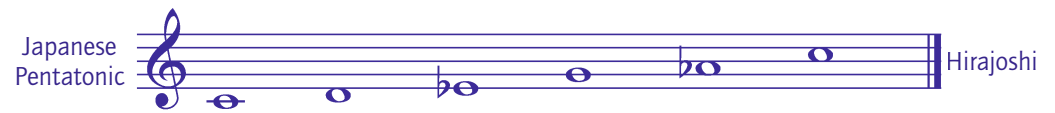
Application Form - The Mysteries of Modes

Please email your booking details to info@tonalismusic.co.uk and pay your fee into the Tonalis Music Centre account: Sort Code 08-92-50, Acc. 68684633

Name: _____ email: _____

Address: _____

Postcode: _____ Tel: _____ Mobile: _____



The MYSTERIES of MODES REVEALED



*Journey into the Inner Life of Modes & Scales
from: the Folk/Church Modes & WORLD Scales to
PENTATONIC Mysteries and NEW SCALES for Our Time*

Tonalis

Workshop Leader: Michael Deason-Barrow

3rd - 4th August 2024

VENUE - THE ARKELL CENTRE, NAILSWORTH, GLOS

Enquiries: Tel. 01666-890460 / info@tonalismusic.co.uk
www.tonalismusic.co.uk

Introduction

Have you ever wondered what it is about an Irish Air, an Indian Raga, a Japanese Pentatonic scale, Early Music, Vaughan Williams' 'Lark Ascending', Miles Davis' Jazz, or the Beatles' 'Eleanor Rigby' that makes them so compelling?

A key answer is that they are all based on different MODES.

Unbeknown to many people, much of the music we hear today is 'constrained' by the simple binary opposition of major and minor scales. But enter into the worlds of FOLK melody (e.g. gorgeous Irish melodies), EARLY MUSIC, or JAZZ and you enter the realm of the 7 folk/church modes which lie beyond the well-worn paths of maj/min tonality.

On this course you will have the opportunity to learn about:

- how each mode has its own ENERGY FIELD and is often associated with different • Emotions • Deities • Times of the Day • Festivals and • Seasons.
- how every change in modes/scales through history mirrors changes in consciousness.

Through these explorations vast doors will be opened for you into the realms of consciousness, music education, healing, composition and much more.

The word 'scale' for an architect is all about the unique proportions of a building. Say the word 'scales' to musicians, however, and it will often conjure up thoughts of years of technical practice. But the deeper meaning of the word scale is that it provides the underlying deep structure and mood against which every melody is experienced.

(N.B. The word 'Mode' is derived from 'Modus' meaning 'mood'.)

But there are many other extraordinary scales beyond the folk/church modes. These can be found in the wide array of WORLD MUSICS we now hear all around us, from: Indian ragas, Persian love songs, Sephardic songs in Klezmer-type modes, to the BLUES.

Then there are PENTATONIC 5 tone-scales that can be found all over the world from Africa and the Hebrides to Javanese Gamelan. Think of all those films of Japanese Samurai warriors - or 'The Last Emperor' in China - and you'll hear how their special moods are all down to the unique forms - and tuning - of their pentatonic scales.

But it's not just ancient worlds that have special scales. The French 'Impressionists' composed in the more incorporeal world of the WHOLE TONE scale, whilst many composers today are seeking to renew our link to cosmic realms by using all 12 TONES in the octave, as well as wanting to bring about a re-newed connection between music and nature by using 'NATURE'S SCALE' found in the universal scale of the Harmonic Series.

Key Themes the Workshop will Explore

On this course you will have the chance to:

- Explore and experience the unique worlds of the 7 MODES (i.e. Lydian, Ionian, Mixolydian, Dorian, Aeolian, Phrygian and Locrian)
- SING a Glorious Array of Songs & Choral Music in each of the 7 modes drawn from Folk, Early, World and Contemporary sources.
 - Discover how Different Modes create amazingly different HARMONIES and MELODIES and embody the quintessential MOODS of each SEASON.
- CO-CREATE stunning IMPROVISATIONS based on different modes.
 - Discover how different modes enable us to explore THERAPEUTIC themes & new approaches to WELL BEING, e.g. light-dark; inner-outer; descending-ascending; & openness-closedness.

The WORKSHOP will also PRACTICALLY EXPLORE:

- WORLD Scales
e.g. Indian Ragas, Sephardic Klezmer and the Blues Scale
- PENTATONIC Scales
e.g. Japanese, Javanese, Chinese, Hungarian and Hebridean
- NEW Scales
e.g. Whole Tone, 12-Tone, Octatonic and Microtonal scales
- NATURE'S Scale
i.e. the Acoustic Scale found in nature's Harmonic Series.

We will do this via singing & playing beautiful instruments such as: Gongs, Streaming Harps, Sitar-like Chorduns & Psalteries, etc.